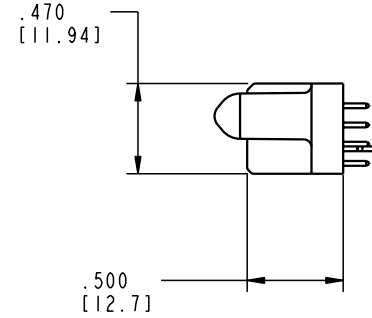
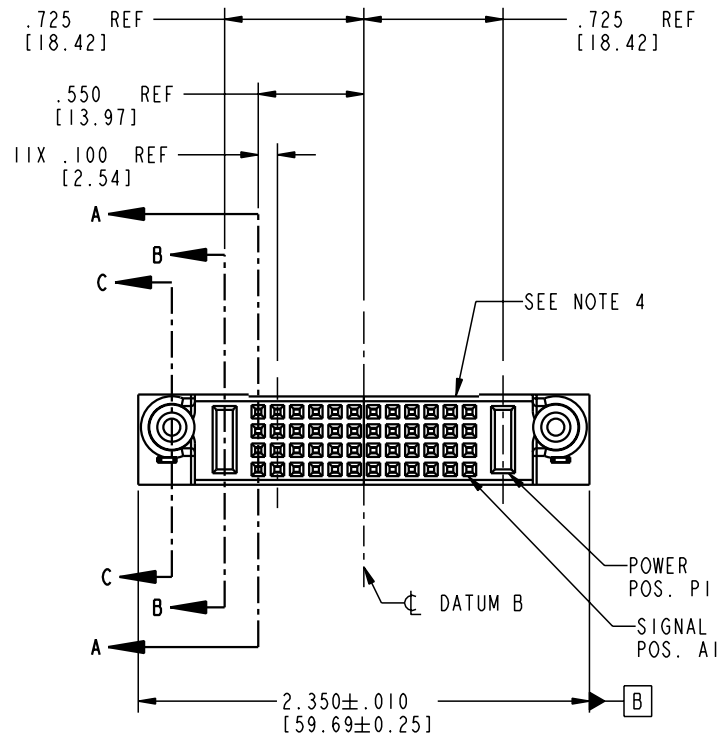


Tous droits strictement réservés. Reproduction ou communication o des liens interdite sous quelque forme que ce soit sans autorisation écrite du propriétaire. Propriété de c FCI. Droits de reproduction FCI.



All rights strictly reserved. Reproduction or issue to third parties in any form whenever is not permitted without written authority from the proprietor. Property of FCI. Copyright FCI.

PRODUCT NO.	ROWS	PWR		SIGNAL																PWR	
		E2	P2	12	11	10	9	8	7	6	5	4	3	2	1	P1	E1				
51740-10104801AA	D C B A																				



CODE	DIM "M" MATING LENGTH	CONTACT TYPE
E	N/A [N/A]	SIGNAL
PA	.042 [1.07]	POWER
HA	N/A [N/A]	HOLD-DOWN

mat'l code				SEE NOTE 2				tolerances unless otherwise specified				CUSTOMER		ELECTRONICS www.fciconnect.com	
lfr	ecn no.	dr	date	linear				.XX ± .01/0.X ± 0.3				COPY		title	
A	V20412	DAI	03/01/02	angles				.XXX ± .005/0.XXX ± 0.13				projection		IP + 48S + IP	
								.XXX ± .0020/0.XXX ± 0.051						VERTICAL SOLDER RECEPTACLE	
								dr				INCH/MM		product family	
								enr				scale		PwrBlade	
								chr				1:1		code	
								appd						213	
														sheet	
														1 of 4	
sheet index				revision sheet				A A A A							
				1 2 3 4											

cage code 22526

Pro/E

PDM: Rev:A

STATUS: Released

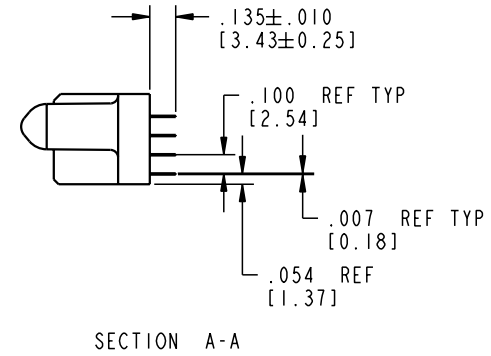
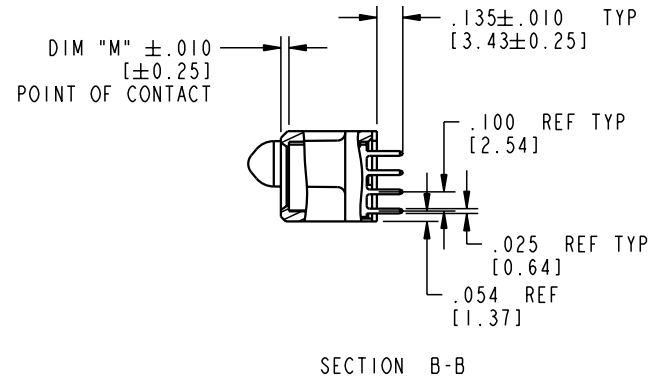
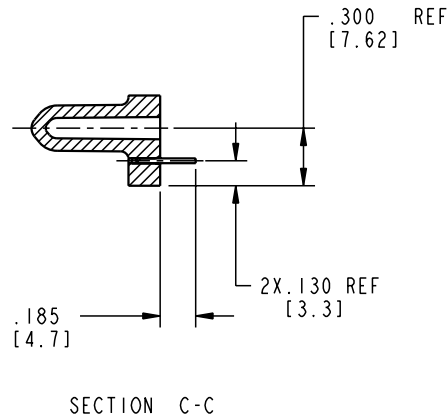
Printed: Aug 14, 2007

Tous droits strictement reserves. Reproduction ou communication a des tiers interdite sous quelque forme que ce soit sans autorisation écrite du propriétaire. Propriete de c FCI. Droits de reproduction FCI.

All rights strictly reserved. Reproduction or issue to third parties in any form whatever is not permitted without written authority from the proprietor. Property of FCI. Copyright FCI.



PRODUCT NUMBER
51740-10104801AA



mat'l code				SEE NOTE 2		tolerances unless otherwise specified		CUSTOMER		ELECTRONICS www.fciconnect.com	
ltr	ecn no.	dr	date	linear	.XX±.01/0.XX±0.3		COPY		title IP + 48S + IP VERTICAL SOLDER RECEPTACLE		
A					.XXX±.005/0.XX±0.13		projection				
					angles	.XXX±.0020/0.XX±0.051		INCH/MM scale 1:1			
				dr	D. INGRAM	03/01/02	product family		PwrBlade	code	213
				enr	J. SWAIN	03/01/02	size		dwg no	sheet	
				chr	J. SWAIN	03/01/02	A		51740-10104801AA	2	
				appd	J. SWAIN	03/01/02					
sheet index		revision sheet									

cage code 22526

Pro/E

PDM: Rev:A

STATUS: Released

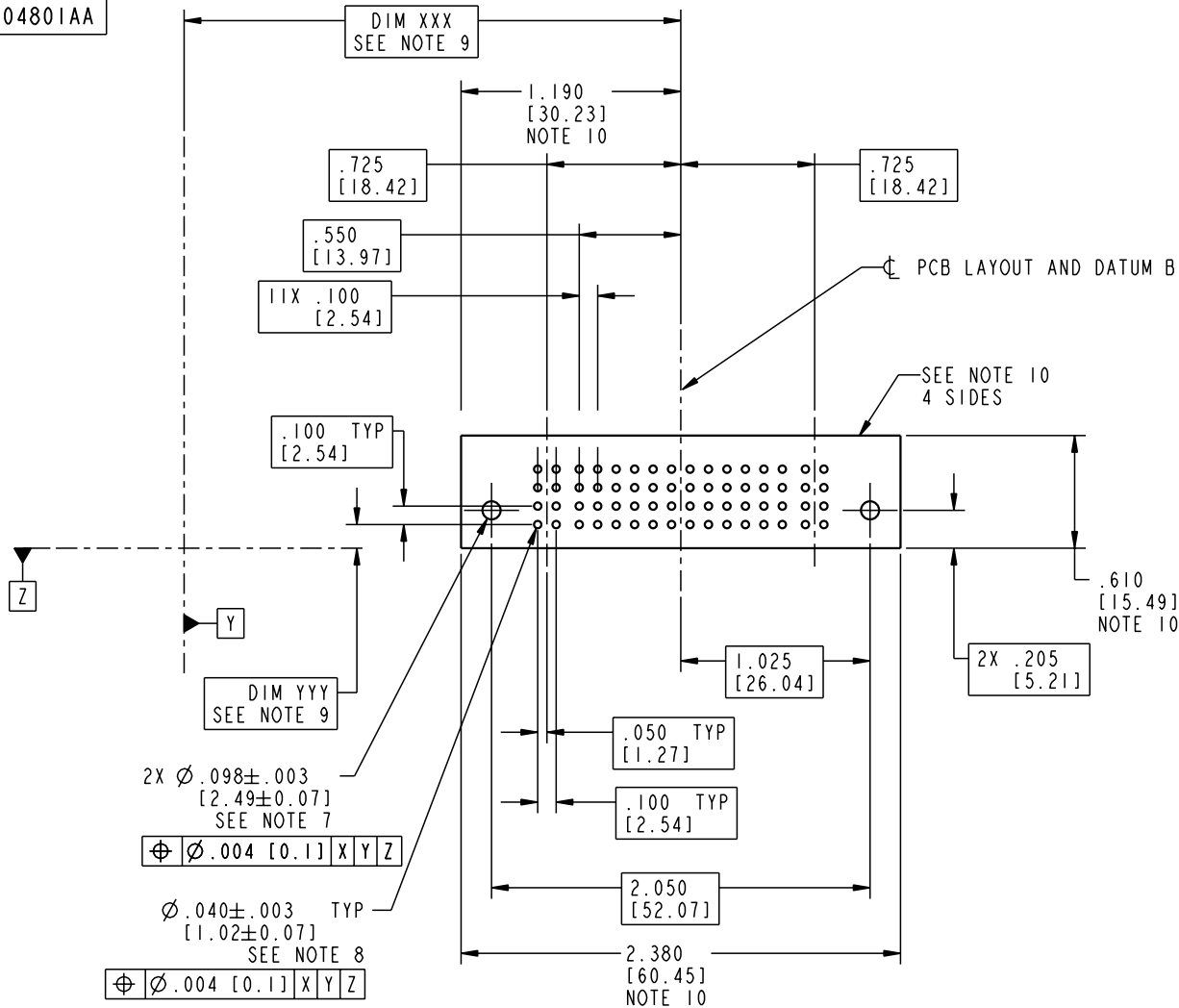
Printed: Aug 14, 2007

Tous droits strictement réservés. Reproduction ou communication o des tiers interdite sous quelque forme que ce soit sans autorisation écrite du propriétaire. Propriete de c FCI. Droits de reproduction FCI.

All rights strictly reserved. Reproduction or issue to third parties in any form whatever is not permitted without written authority from the proprietor. Property of FCI. Copyright FCI.



PRODUCT NUMBER
51740-10104801AA



2X $\varnothing .098 \pm .003$
[2.49±0.07]
SEE NOTE 7
 $\varnothing .004$ [0.1] X|Y|Z

$\varnothing .040 \pm .003$ TYP
[1.02±0.07]
SEE NOTE 8
 $\varnothing .004$ [0.1] X|Y|Z

mat'l code		SEE NOTE 2		tolerances unless otherwise specified		CUSTOMER		ELECTRONICS www.fciconnect.com	
ltr	ecn no.	dr	date	linear	.XX±.01/0.X±0.3	COPY		title	
A				angles	.XXX±.005/0.XX±0.13 .XXX±.0020/0.XX±0.051	projection		IP + 48S + IP VERTICAL SOLDER RECEPTACLE	
				dr	D. INGRAM 03/01/02	 INCH/MM		product family	
				enr	J. SWAIN 03/01/02	scale		PwrBlade	
				chr	J. SWAIN 03/01/02	1:1		code	
				appd	J. SWAIN 03/01/02			213	
sheet index		revision sheet						sheet	
								3	

cage code 22526

Pro/E

PDM: Rev:A

STATUS: Released

Printed: Aug 14, 2007

Tous droits strictement réservés. Reproduction ou communication o des tiers interdite sous quelque forme que ce soit sans autorisation écrite du propriétaire. Propriété de c FCI. Droits de reproduction FCI.



All rights strictly reserved. Reproduction or issue to third parties in any form, whenever is not permitted without written authority from the proprietor. Property of FCI. Copyright FCI.

PRODUCT NUMBER
51740-10104801AA

NOTES:

1. DIMENSIONS AND TOLERANCES ARE IN ACCORDANCE WITH ASME Y14.5M, 1994 UNLESS OTHERWISE SPECIFIED.

CONNECTOR NOTES:

- ② HOUSING MATERIAL: UL 94 V-0 GLASS FILLED HIGH-TEMP THERMOPLASTIC
POWER CONTACT MATERIAL: COPPER ALLOY
SIGNAL PIN MATERIAL: COPPER ALLOY
- 3. PLATING:
SIGNAL PINS: 30u"/0.76um Au OVER 50u"/1.27um Ni
POWER CONTACTS: 50u"/1.27um Ni UNDER ALL WITH 30u"/0.76um Au ON CONTACT AREA AND SnPb ON PCB INTERFACE

④ "MANUFACTURER" NAME, P/N, AND DATE CODE TO APPEAR ON THIS SURFACE.

5. PRODUCT SPECIFICATION GS-12-149.

PCB NOTES:

- 6. ALL HOLE DIAMETERS ARE FINISHED HOLE SIZE.
- ⑦ MOUNTING HOLES, WHERE APPLICABLE, ARE UNPLATED.
- ⑧ $\varnothing .0453 \pm 0.0010$ [1.151 \pm 0.025] DRILLED HOLES PLATED WITH 0.0003 [0.008] MIN SnPb OVER .001 [0.03] TO .003 [0.08] Cu PLATING TO ACHIEVE $\varnothing .040 \pm .003$ [1.02 \pm .07] HOLE.
- ⑨ "DIM XXX" AND DIM "YYY" TO BE DETERMINED BY THE CUSTOMER.
- ⑩ CONNECTOR KEEP-OUT ZONE

mat'l code				SEE NOTE 2		tolerances unless otherwise specified		CUSTOMER		ELECTRONICS www.fciconnect.com	
ltr	ecr no.	dr	date	linear	.XX ± .01/0.X ± 0.3		COPY			title	
A					.XXX ± .005/0.XX ± 0.13		INCH/MM			IP + 48S + IP	
				angles	.XXX ± .0020/0.XXX ± 0.051		scale		product family		
				dr	0° ± 2°		1:1		PwrBlade		
				enr	D. INGRAM	03/01/02			code		
				chr	J. SWAIN	03/01/02			size		
				appd	J. SWAIN	03/01/02			dwg no		
sheet index		revision sheet						A		51740-10104801AA	
										213	
										4	

1 | 2

Pro/E

3 |

cage code 22526

4

PDM: Rev:A

STATUS: Released

Printed: Aug 14, 2007